

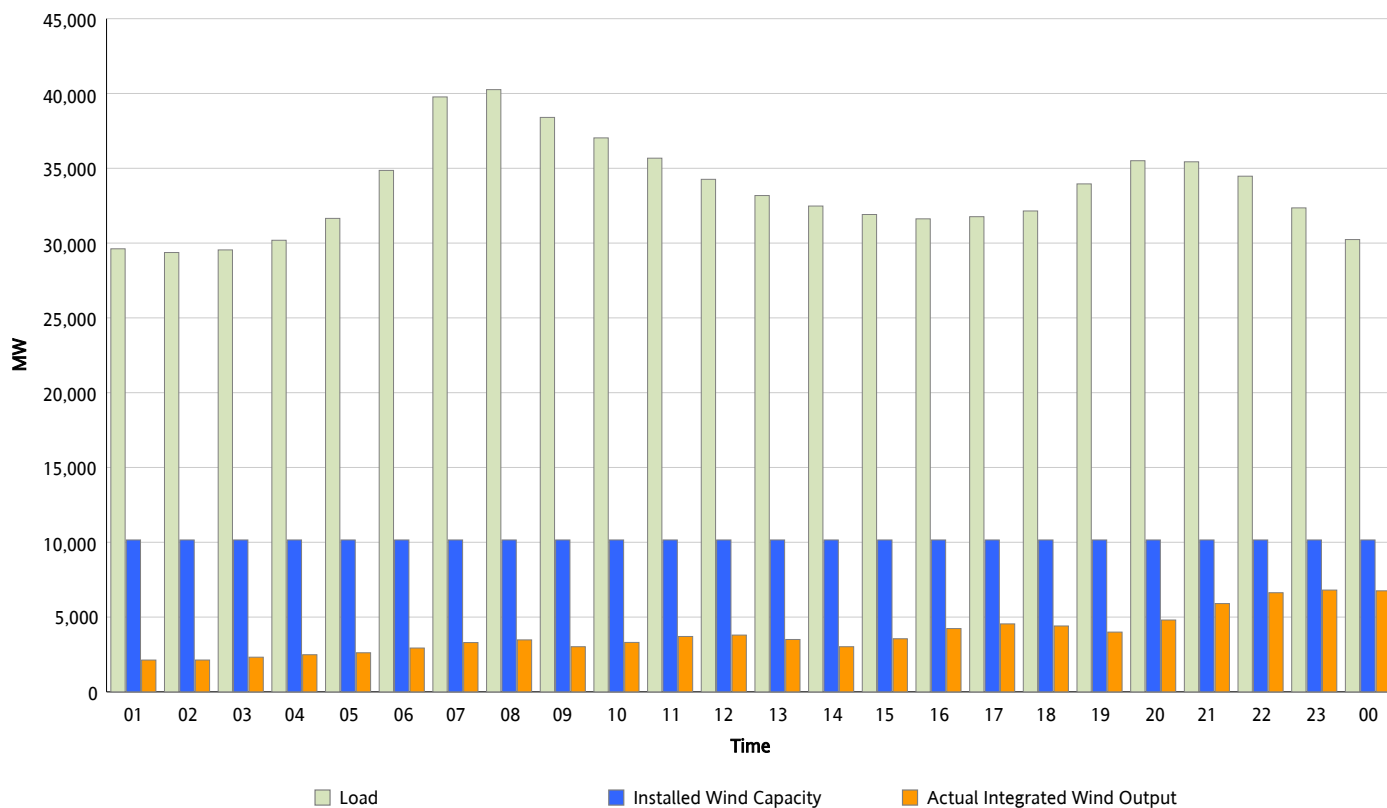


## ERCOT Grid Operations

### Wind Integration Report : 03/06/2013

Peak Load	40,256 MW
Load Peak Hour (HE)	08
Wind Over Peak	3,476 MW
Wind Record 02/09/13	9,481 MW
Max Wind Value*	6,972 MW
Wind Peak Time	21:50
Wind Integration %	20.55 %

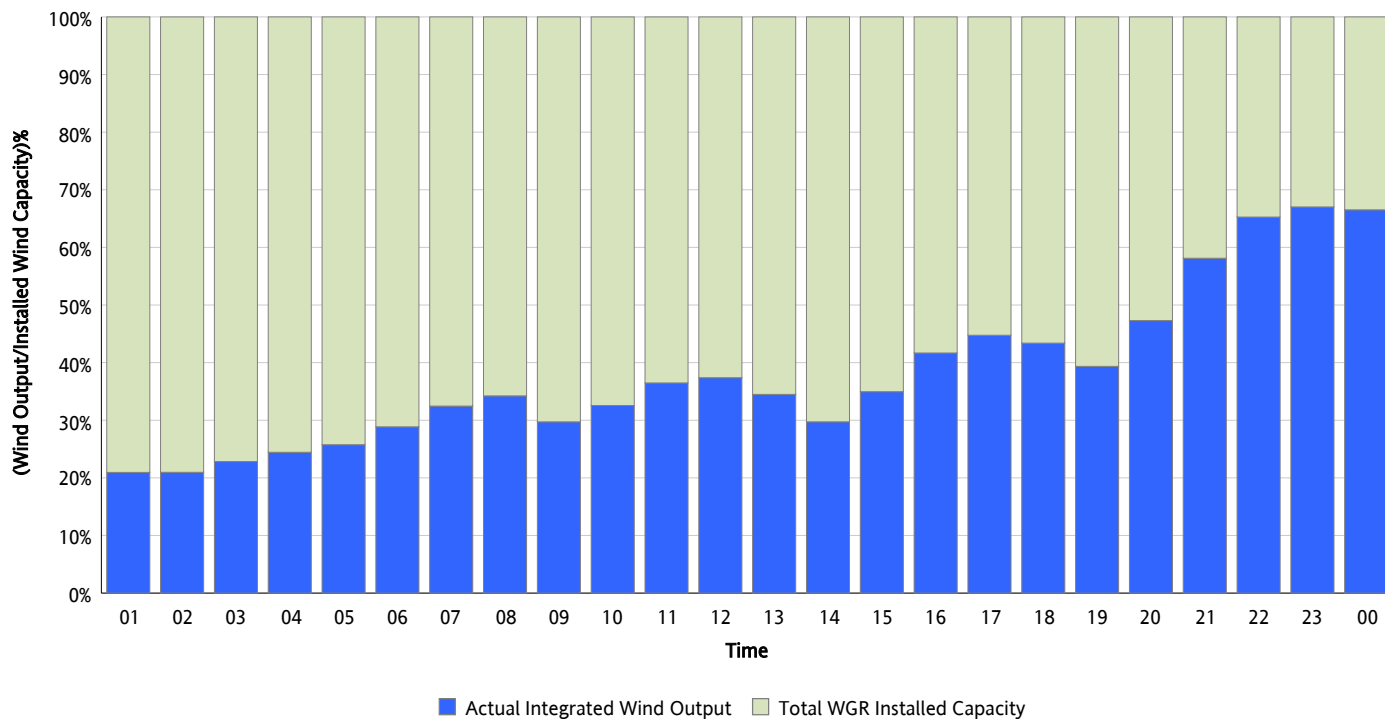
**Hourly Average Actual Load vs. Actual Wind Output**  
**03/06/2013**



\* Wind Record and Wind Max represent instantaneous values and the rest of the values are integrated over the hour

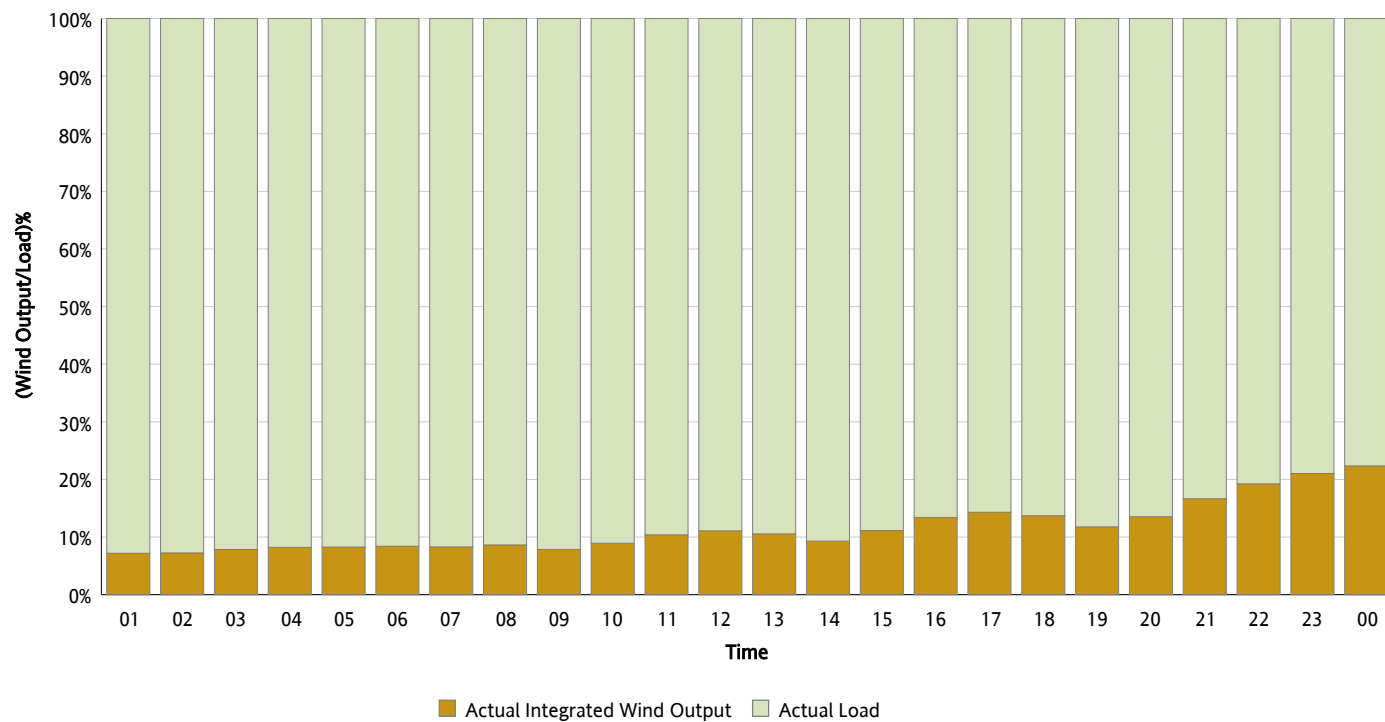
## Actual Wind Output as a Percentage of the Total Installed Wind Capacity

03/06/2013



## Actual Wind Output as a Percentage of the ERCOT Load

03/06/2013



## ERCOT Load vs. Actual Wind Output

02/27/2013 - 03/06/2013

